

Customer :

customer

Customer part :

customer part

Comment :

Comment

S1=0.06

S2=0.29

Tmax=459

Tp S2=498.0

PI=0.17

HI=38

Sample =8755.5

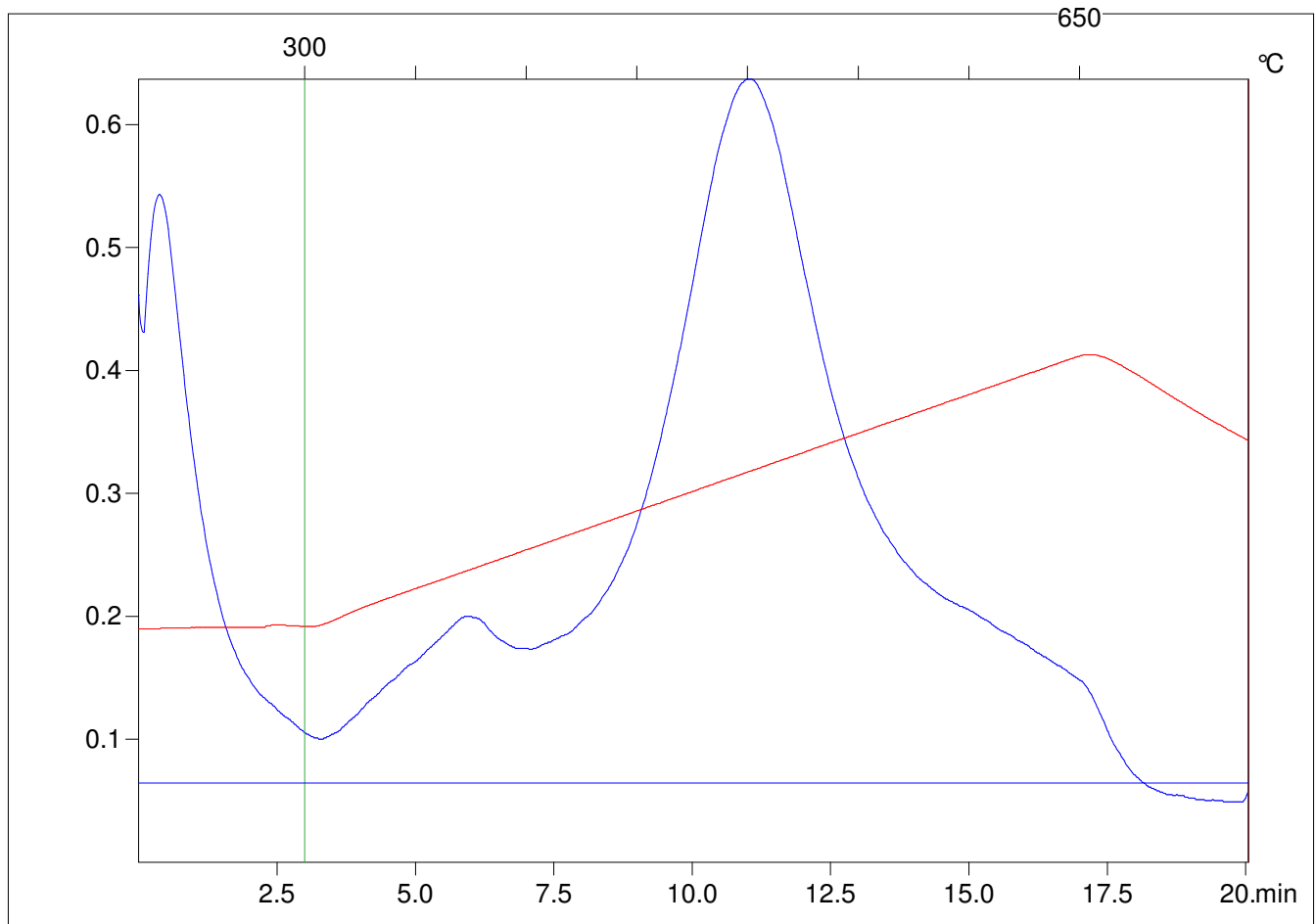
Method =Bulk Rock

Cycle=Basic

KFID(10*9)=1167

Qty =70.1

TOC=0.77



C:\VINC\PK141021\PK002.R00 : FID pyrolysis graphic

State

Pyro Status

Oxi Status